
PATHWAYS TO SUCCESS



attention
HOMES

CHANGING LIVES OF
YOUTH IN CRISIS

2013 ATTENTION HOMES
ANNUAL REPORT



Dear Friends,

2013 was a remarkable year for Attention Homes - one that ignited new "Pathways to Success" for our struggling youth in crisis and the dedicated staff who serve them vigorously and with compassion each day.

In addition to our established residential child care facility, the renovation of our runaway and homeless youth facility allowed for increased access and breadth of services, broadened community awareness through our signature events, Kaleidoscope and Sleep Out, unprecedented volunteer participation, and new corporate partnerships.

Through your generous support, we were able to put our mission to work by providing new and improved opportunities for our youth to redirect their lives from homelessness towards self-sufficiency.

- Added an on-site mental health care professional and certified addictions counselor for individual/group counseling and family mediation
- Employed a full time case manager and graduate level interns to accommodate growing numbers of youth with increased supervision and behavioral support
- Secured scholarships for our youth to attend an experimental outdoor education program
- Received GED funding and vocational support with an employment counselor to develop and enhance job preparedness
- Expanded hours of operation to 24/7 to increase safety and access to services throughout the day
- Finished a fully-funded 2,200 square foot shelter renovation which increased our overnight capacity from 10 to 16 beds and our drop-in capacity from 25 to 40 youth, and features a new drop-in resource center and professional working kitchen for volunteer groups and youth cooking classes.

2013 was also significant in that Attention Homes applied for and received two highly competitive and sought after federal grants for the first time. For the next three years, our Runaway and Homeless Youth Program will benefit from over \$200,000 in funding each year for our basic center program and street outreach. With this coveted support, Attention Homes joins an elite group of organizations who gain access to high level trainings, best practice resources and national recognition. The awards are a testament to both the strength of our organization and the local need for our services.

Our work is far from over but we're truly gratified by the strong foundation being built both in terms of our infrastructure and community of support. Together we can help change lives and make our community both stronger and healthier. Thank you for being a part of this journey.

Warm regards,



Claire Clurman
Executive Director



Roberta Wolff
President,
Board of Directors

ACCOMPLISHMENTS

THE NEEDS ARE HIGH. THE STREETS ARE DANGEROUS.

On any given night in 2013, 921 youth (ages 13-24) were reported homeless in the Denver Metro area and 213 of them were in Boulder County. Approximately, 64 shelter beds exist for these 921 youth, meaning only 7% of them have a safe place to sleep at night. In the state of Colorado, 30% of kids who run away will be actively recruited for trading sex for food and other necessities within 48 hours of leaving home.

We value all youth and work to change lives and reunite families in difficult times. Our community-based programs include street outreach, day drop-in services, overnight shelter and residential care, fostering psychosocial and life skill development through positive behavioral change.

Utilizing a trauma-informed care approach and positive youth development philosophy, Attention Homes seeks to build "Pathways to Success" - programs and services which help youth achieve permanent connections, well-being, safety and self-sufficiency through education, housing, and employment. Our goal is to help youth in crisis become healthy, productive members of our community.

In 2013, we laid a strong foundation for providing youth with increased access services to pave the way for a successful future. Here is what we accomplished last year:

- **Grew** organizational giving to almost \$ 850,000 in 2013 from \$ 591,199 in 2012.
- **Completed** our newly renovated Runaway and Homeless Youth Shelter (RHY), with an additional 2,200 square foot renovation to increase our capacity to serve.
- **Secured** a \$210,000 Federal Grant to enable increased services for Street Outreach and Basic Needs services
- **Increased** Runaway and Homeless Youth Center access to 24/7 providing over 5,000 days of care.
- **Evolved** into a HUB of critical needs services to ensure that youth have access to outside specialists and on-site care for health and wellness, life skill development, educational, employment, and vocational support services in collaboration with over 70 local organizations.
- **Committed** 2000+ staff and volunteers hours to street outreach in order to seek out youth and provide them with emergency assistance and nourishment.
- **Completed** a new branding platform to better communicate our broadened scope of services and educate the local community about the complex issues surrounding displaced and homeless youth.
- **Broadened** volunteer participation to over 814 volunteers serving our youth; a 99% increase from 2012.
- **Doubled** Sleep Out for Homeless Youth awareness event participation to 83 sleepers, added 800+ new donors, and raised \$85,000.
- **Garnered** strong community support for our Kaleidoscope auction gala with 275 people in attendance and raising \$120,000 one week after a devastating 500 Year flood.

At Attention Homes, we're changing lives of youth in crisis!

Permanency, Well-Being, Safety, and Self Sufficiency are the pathways to success that we're building together with our youth.



"I've been through a lot and seen a lot but I don't let that bring me to my knees. Attention Homes has a lot of rules and that can be annoying, but I know I'm safe here." - Devin

BOARD & STAFF



2013 BOARD OF DIRECTORS

Larry Dennis, President
*Former Owner, Dennis
Printing Service*

Laurie Duncan, Treasurer
*Health & Eldercare
Consultant*

Roger Ayan
First National Bank

Mary Estill Buchanan
*Former Colorado
Secretary of State*

Maureen "Beanie" Brady
Community Member

Mark Christiansen
Covidien

Jeff Foltz
Hensley and Kennedy PC

Catharine E. Fortney
Boulder Community Health

Jim Hayes
USI Colorado, LLC

**Rebecca Lorenz-
Humphries**
*Cornerstone Home
Lending, Inc.*

Jennifer McCord
RAR Interior Design

Rusty McCoy
RE/Max of Boulder

Baird McKeivitt
Xcel Energy

Lars Parkin
Bliley Insurance

Paul Smith
Bryan Cave HRO

Roberta Wolff
Colorado State Bank & Trust

Nancy Caccavallo
Rodan & Fields

Mary Coonce
Porchfront Homes

Brian Seeley
FirstBank

Arno Neimand
*Former President & CEO,
Body Bar Systems*

"They provided food
and a warm bed with
plenty of resources
to help me on my
journey. For that I have
great appreciation for
Attention Homes."

– Adam



ADMINISTRATIVE

Claire Clurman
Shauna Davidson
Allison Disbrow

Sara Horn
Sally Hughart
Brenda Logan
Chris Nelson

Jim Rianoshek
Marnie Williams
Brittney Wilson

PROGRAM

Norina Asante
Adriana Barsan
Nick Barth
Tori Bauer
Kathryn Brand
Madison Bright
Ellen Bruex
Megan Bruce
Trevor Ekstrom
Jeremy Fagan
Patty Flueck
Katie Green
Whitney Grigsby

Tara Haderl
Patricio Illanes
Rod Jackson
Michaela Kelly
Meredith Landau
Jena Leddon
Rebecca Martinez
Anne Marie McClintock
Tajah McDonald-Williams
Riley Mekelburg
Cera Merrick
Rachel Overton
Peter Pace

Danelle Pifer
William Putnam
Luke Rianoshek
Jenna Richard
Tawny Rogers
Daniel SanFilippo
Kerri Scharfenberg
Alma Sever
Aiya Staller
Andrew Sterling
Nathan Thomas
Sarah Trautman
Hudson Wilkins

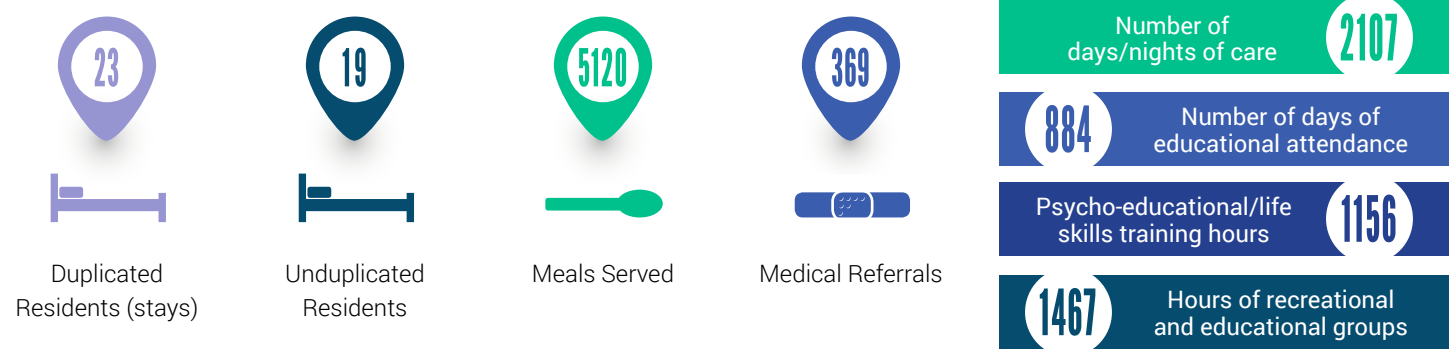
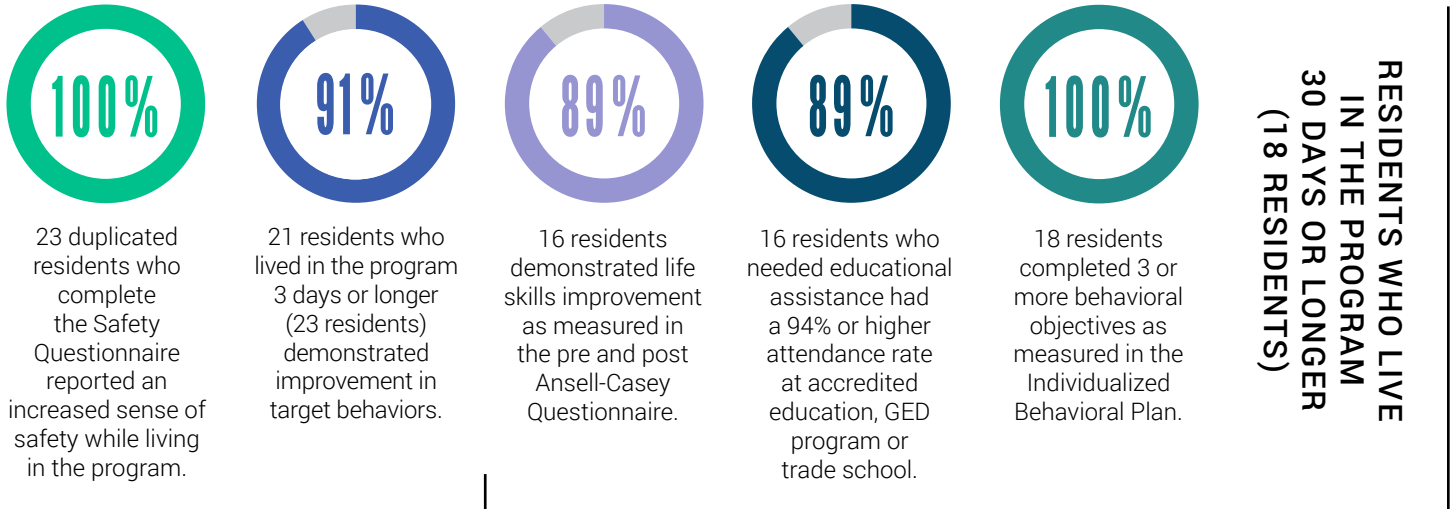


THE PATH HOME

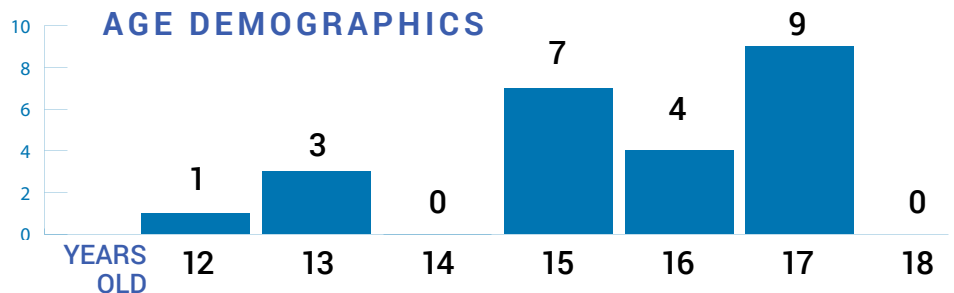
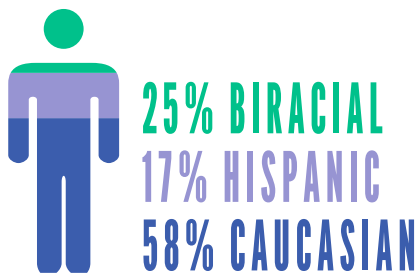
Attention Homes' Adolescent Residential Care (RES) program offers a safe, structured, home-like setting to at-risk youth, ages 12-17, placed through social services departments, as a result of family disruption and other crises.

ADOLESCENT RESIDENTIAL CARE PROGRAM REVIEW

OUR GOAL: Provide abused, neglected and troubled youth placed through social services with temporary residential, behavioral and case management services that prepare them for long-term success.



RACE, AGE & GENDER DEMOGRAPHICS



RUNAWAY & HOMELESS YOUTH PROGRAM REVIEW

THE PATH HOME

Attention Homes' Runaway & Homeless Youth (RHY) program provides street outreach, day drop-in, and overnight emergency shelter services to homeless teens.

OUR GOAL: Reduce youth homelessness with a continuum of care that moves youth from the streets or in the shelter towards stable, long-term housing and/or family re-unification.

OVERNIGHT SHELTER



102 shelter residents who completed the safety questionnaire reported an increased sense of safety while in the RHY program.

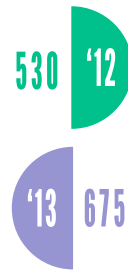


53 shelter residents whose discharges are known (71 total residents) met long-term housing goals.



12 clients with positive discharges who took advantage of aftercare continued to meet their long-term housing goals.

Number of unduplicated youth served at RHY increased by 27% in 2013



DROP-IN: THE SOURCE



85 of Drop-in youth who completed the Entry Survey (345 youth) had prior contact with the RHY outreach team.



596 of Drop-in youth basic needs were met as tracked through the entry survey.

Number of unduplicated youth served at Drop-In increased by 16% in 2013



STREET OUTREACH

2954

Number of street contacts made in 2013 with 100% receiving food and other basic needs including socks, warmers, referrals, sex kits, emergency blankets, and ponchos.

2000

Number of hours were devoted to street outreach to seek out youth to provide emergency assistance and nourishment.



75% CAUCASIAN
7% AFRICAN AMERICAN
4% ASIAN
4% BIRACIAL
10% HISPANIC
2% NATIVE AMERICAN
1% OTHER

5 TRANS/OTHER • 33 FEMALE • 65 MALE



Unduplicated Drop-In contacts

596

5312

Number of duplicated Drop-in contacts

Psycho-educational/life skills training hours

2597

153

Number of educational referral contacts

Number of housing referral contacts

247

566

Hours of case management provided

Number of vocational referral contacts

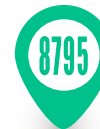
386



Nights of Shelter Provided



Unduplicated Overnight Residents

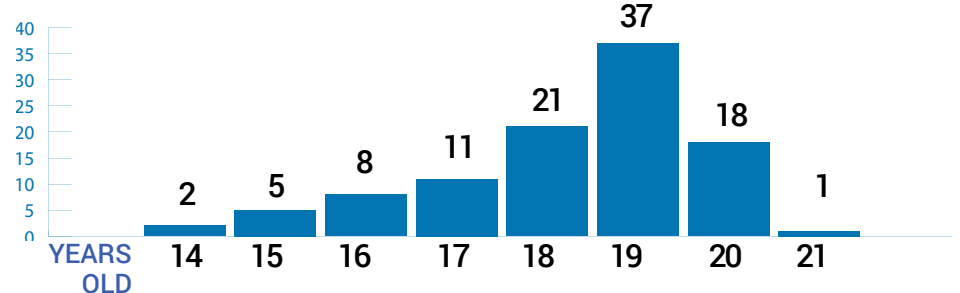


Meals Served



Medical Referrals

OVERNIGHT SHELTER CLIENT AGE DEMOGRAPHICS



2013 FINANCIAL CONTRIBUTORS:

BUSINESSES, FAITH COMMUNITIES, FOUNDATIONS, SERVICE CLUBS AND SPONSORS

Hundreds of businesses, foundations, service clubs, faith organizations, sponsors and individuals made both generous financial and in-kind donations in 2013. Each played an important role in helping youth become valued and productive community members. Attention Homes values our individual contributors however, to avoid compromising privacy, we do not list individual names.

Active Interest Media	Community Foundation Serving Boulder County	Holmes Family Foundation	Qualcomm Foundation
Amgen Colorado	Community United Church of Christ	Hope Boulder Community Church	Qualcomm Matching Gift Program
Anschutz Family Foundation	Conversant	Hunter Douglas Inc.	Re/Max of Boulder, Inc.
Argosy Foundation	Cornerstone Church of Boulder	Hunter-White Foundation	Red Empress Foundation
Armstrong Family Foundation	Cornerstone Home Lending, Inc.	JILA Institute	Restaurant 4580
Art 4 Moore Fund of the Tides Foundation	Crocs	Kasa Japanese Grill	Rocky Mountain Realtors
At-Risk Alternatives, LLC	Culver Investment Company LLC	Kiwanis Club of the Foothills	Silpada Foundation
Biergarten	Dinwiddle Family Fund	Larson Realty Inc.	St. Andrew Presbyterian Church
Black Roofing, Inc.	Ditzel LLC	Lexmark International Inc.	St. John's Episcopal Church
Bliley Insurance Group	Dragontree Holistic Day Spa	Longs Peak United Methodist Church	Starfish Jewelry
Bohemian Biergarten Inc	East Boulder Optimist Club	Macerich & Twenty Ninth Street	Sterling - Rice Group, Inc.
BOKF Foundation	Eastpark Associates	Martin Associates	Superior Liquor
Boulder County Commissioners	El Pomar Foundation	Melvin and Ryna Cohen Foundation	Talley
Boulder Luncheon Optimist Club	FCI Constructors, Inc.	Micro Motion, Inc.	The Bud & Ruth Johnson Family Fund
Boulder Rotary Club	First Christian Church	Mile High United Way	The Widow's Bane
Boulder Valley Rotary Community Foundation	First Congregational Church of Christ	Mountain View United Methodist Church	Tiger Natural Gas
Boulder Valley Unitarian Universalist Fellowship	First Presbyterian Church	Nathan B. & Florence R. Burt Foundation	Trinity Evangelical Lutheran Church
Brett Family Foundation	First United Methodist Church of Boulder	Nationwide Foundation	Tripping Griswolds
Brio Enterprise, LLC	FirstBank	Native Foods	United Way Silicon Valley
Cahill, O'Kelly & Associates	Foothills United Way	Nod & Rose Storehouse	Urban Mattress
Casey Middle School PTA	GE United Way Campaign	Open House Program	USI Insurance Services, LLC
CBiz, Inc.	Google Matching Gifts Program	Palmos Development Corp.	Virginia Hill Charitable Foundation
Central Optimists	Grandrabbits Toy Shoppe	Pasta Vino	VISA Matching Gift Program
Chevron Humankind Matching Gift Program	Great Western Bank	Peter & Paul Greek Orthodox Church, Philoptochos Society	Watson & Associates, CPAS, LLC
Collins Foundation	Great-West Life & Annuity Insurance Company	Peter J. Martin Consulting Inc.	Wells Fargo Community Support Campaign
Colorado State Bank Foundation	Highest Image Foundation	PotashCorp	Wells Fargo Foundation
			Western Digital Foundation
			Westfield Company
			Xcel Energy

"I came to Attention Homes new and fresh; away from a troubled place. I was scared and lonely at first, but after staying here, I have accomplished a lot and grown so much as a person. I feel great about myself. I stopped using drugs and alcohol, and achieved a lot emotionally and mentally. The staff played a big part in my success by offering care and compassion. They believed all along that I could become the confident, hardworking, stable person I am now." - Chris



OUR DONORS

2013 IN-KIND AND AUCTION CONTRIBUTORS:

IN-KIND CONTRIBUTIONS GREW FROM \$60,953 IN 2012 - \$106,074 IN 2013

In-kind donations included but were not limited to clothing, food, hygiene and personal care items, toiletries, cleaning supplies, recreational equipment, activity passes and cultural tickets and professional services. 2012 in-kind contributions, excluding auction items, were valued at \$106,074. Thanks to all of our in-kind donors!

Amber Lights
American Furniture Warehouse
Arapahoe Basin Ski Area
Arrowhead Awards
ArtMart Gifts
Atonement Lutheran Church
Bacco Trattoria & Mozzarella Bar
Beau Jo's
Belly Up
Black Roofing, Inc.
Bloomingbirds
Bodywork Bistro
Bookcliff Vineyards
Boulder Army Store
Boulder Beer Company
Boulder Bookstore
Boulder CPR
Boulder Creek Winery
Boulder Flatirons Rotary Club
Boulder Furniture Arts
Boulder Phone
Boulder Residence Inn by Marriott
Boulder Rock Club
Boulder Wine and Spirits
Brasserie Ten Ten
Busy Bees
Calvary Bible Church
Casa Alvarez
CCM Consulting Group
Central Optimists
Centro Latin Kitchen
Century 16
Chelsea Boutique
Christy Sports
Church Women United
Collegiate Kiwanis International
Color Me Mine, Boulder
Common Threads
Community United Church of Christ
First United Methodist Church of Boulder
Flatirons Golf Course
Gaiam
Gallery On The Go
General Palmer Hotel
Girl Scout Troop 3369
Grandrabbits Toy Shoppe
Gypsy Jewel
Hazels Beverage World
Home Depot
Hurst & Associates, Inc.
Illegal Pete's
IZZE Beverage Company
Jewels by Park Lane
Keg Steakhouse & Bar
Kiwanis Club of the Golden Nuggets
Kroenke Sports

Lady Falconburgh's Barley Exchange
Level 3 Communications
LID Landscaping
Louisville United Methodist Church
Madcap Theater
Maruca Design
Dragonfly Coffee Roasters
Durango & Silverton Narrow Gauge R.R.
Eagle Cliff House Bed & Breakfast
East Boulder Optimist Club
Dennis Small Cultural Center
Downtown Aquarium: An Underwater Adventure
Elements Therapeutic Massage
Dagabi Cucina
Dark Horse Bar & Grill

Old Tibet
Ozo's Coffee Co.
Parallel Arts
Pasta Jay's
Pasta Vino
Pedestrian Shops
Perlick Legal Counsel PC
Peter & Paul Greek Orthodox Church,
Philoptochos Society
Pettyjohn's Liquor & Wine
Pink Fog Studios
Pompadours Hair Salon
Que's Coffee
Rebecca's Apothecary & Supply
Riffs
Rockin' Robin's
Rodan & Fields Dermatologists
Rodney Saver and the Mont Alto Orchestra
Rueben's Burger Bistro
Safeway
Sammy Emerson Photography
Savory Spice Shop
Savvy on Pearl
Sheerar Studios, LLC
Shuttles, Spindles & Skeins
SkyVenture Colorado
Spruce Confections
Starfish Jewelry
Sturtz & Copeland Florist
Sunbelt Rentals
Superior Liquor
Swany America Corp.
Symmetry Builders
Telluride Ski & Golf
Ten20
The Dickens Tavern
The Fox Hill Club
The Med
Trapzilla
Turley's
Two Hands Paperie
Two Sole Sisters
Valmont Community Presbyterian Church
Vertical Fusion
Volcom
Walleroo Hat Co.
Walnut Brewery
Walnut Cafe
Wandering Blue Studios
Weebee Farms
Whole Foods Market
WiseLife Consulting
Wolf Creek Ski Area
Wonderbound
Yellow Scene Magazine
YMCA of the Rockies

**"People will forget
what you said, people
will forget what you
did, but people will
never forget how you
made them feel."
~ Maya Angelou**

Enstrom Candies
CU Juvenile and Family Law Club
Excel Environmental, Inc
Courtyard by Marriott - Boulder
Farmer John's
Cottonwood Institute
CorePower Yoga
Fiori Flowers
Fire Stop Tech - CK Ranch Inc.
First Congregational Church of Christ
Morrell Printing Solutions
Mountain Angler
Mountain High Appliance
Mountain Sun Pub & Brewery
Niwot Liquor Store
Nod & Rose Storehouse
North Boulder Liquor
O'Dell's Western LLC
Ocean First Divers
Old Chicago

2013 VOLUNTEER GROUPS & SERVICE COLLABORATORS

VOLUNTEER GROUPS AND COMMUNITY PARTNERS GREW 30% IN 2013

Attention Homes works closely with many service collaborators, as well as volunteer groups and faith communities, who are passionate about our mission. Generous contributions of time and talent received from individuals and families, corporate teams, service clubs, and faith communities have grown exponentially.

A Precious Child	Casey Middle School Peace Jam	Girl Scout Troup 2388	St. Aidan's Episcopal Church
Adams County Department of Social Services	Central Optimists	Glacier View Ranch	St. John's Episcopal Church
AIM House	Charles Schwab	Grace Lutheran Church	St. Martin de Porres
Alexander Dawson School	Church of Inner Light	Greenwood Thrift Stores	St. Vrain Valley School District
Arapahoe County Department of Social Services	Church Women United	Growing Gardens	Stand Up for Kids
Bethel United Methodist Church	City of Boulder Parks & Recreation	H.O.P.E. Longmont	Starbucks Coffee Company
Boulder Breakfast Optimist Club	City of Boulder Police Department	Halycon School	Subway
Boulder Business Women's Network	City of Longmont Police Department	Handyman Matters	Teen Clinic
Boulder Central Optimist Club	Chipotle Mexican Grill	Hep-C Connection	The Inn Between
Boulder Community Hospital	Clear Creek County Department of Social Services	Hope Boulder Community Church	Tiger Natural Gas
Boulder County AIDS Project (BCAP)	Clinica Family Health Services	Immaculate Conception Catholic Church	Trekking Chefs
Boulder County Cares	Colorado Rockies	International English Center	Trinity Lutheran Church
Boulder County Community Justice Services	Colorado Youth for a Change	Jefferson County Department of Social Services	Unitarian Universalist Church of Boulder
Boulder County Department of Housing and Human Services	Community Food Share	Justice High School	Urban Peak
Boulder County Departments of Probation and Justice	Community United Church of Christ	Kiwanis Club of the Golden Nuggets	Vail Resorts
Boulder County Integrated Substance Abuse-Specific Intensive Supervision (ISIS)	Congregation B'nai Chaim	Lafayette United Methodist Women	Valmont Community Church
Boulder County Intensive Teen Outpatient Program	Congregation Bonai Shalom	Level 3 Communications	WhiteWave Foods Company
Boulder County Mental Health	Congregation Har HaShem Covidien	LifeBridge Christian Church	Women's Health
Boulder County Sheriff's Department	CU Better Boulder Better World	Longs Peak United Methodist Church	Xcel Energy
Boulder Financial	CU Colorado Public Interest Research Group (CoPIRG)	McDonalds on 28th Street	YMCA of Boulder Valley
Boulder Flatirons Rotary Club	CU Family & Juvenile Law Club	McKesson Corporation	Zeta Beta Tau
Boulder Food Rescue	CU Student Organization for the Study of Religion (SOSR)	McKinney-Vento	Zonta Foothills Club
Boulder High School	CU Volunteer Resource Center	Made for Life	Alexander Dawson School
Boulder Luncheon Optimist Club	Dental Aid	Meals on Wheels	Boulder Valley Rotary
Boulder Municipal Court	Denver County Department of Social Services	Memorial United Methodist Church	Church of Jesus Christ of Latter Day Saints Missionaries
Boulder Newcomers Club	Douglas County Department of Social Services	Mental Health Partners	End Hunger Now
Boulder Outreach for Homeless Overflow (BOHO)	East Boulder Optimist Club	Mesa School of the Arts	First Congregational Church of Boulder
Boulder Peace Jam	Echo Mountain	Monarch High School	First United Methodist Church Boulder
Boulder Police Department	Emergency Family Assistance Association (EFAA)	Mountain View United Methodist Church	Flatirons Rotary
Boulder Prep School	Emmaus Road Community Church	Moving to End Sexual Assault (MESA)	Hope Boulder Community Church
Boulder Public Library	Fairview National Honors Society	MWH Global	Just Serve
Boulder Shelter for the Homeless	First Christian Church	Nederland High School	Keller Williams
Boulder Valley Christian Church	First Congregational Church	New Vista High School	Kiwanis Golden Nuggets
Boulder Valley High School	First Presbyterian Church	Noodles & Co.	Le Tip Networking Group
Boulder Valley Rotary Club	First United Methodist Church of Boulder	OASOS	Level 3
Boulder Valley School District	First United Methodist Church of Lafayette	Odd Fellows Lodge Boulder No. 9100F	Louisville United Methodist Church
Boulder Valley Unitarian Universalist Fellowship	First United Methodist Church of Louisville	Old Chicago	Naropa University
Boulder Valley Women's Health Center	Foothills Kiwanis Club of Boulder	OUT Boulder	National Day of Service
Bridge House	Foothills United Way Volunteer Connection	People's Clinic	New Vista High School *
Broomfield County Department of Social Services	Front Range Community College	Peter & Paul Greek Orthodox Church, Philoptochos Society	Qualcomm
Calvary Bible Church	Gateway Park Fun Center	Phi Alpha Delta	Rally Software
CareConnect	Gemini	Planned Parenthood	St. Andrews Presbyterian Church
Carriage House	Gilpin County Department of Social Services	Prax(us)	Trekking Chefs *
Casa Alvarez	Girl Scout Troop 1943	Sacred Heart of Jesus Church	University of Colorado Law School
		Saint Andrew Presbyterian Church	University of Colorado President's Leadership
		Save Our Youth	University of Colorado Summer Program
		Second Baptist Church of Boulder	Vail Resorts
		September School	White Wave
		Sevens	Young Professional Meet Up Group
		Silver Wings	
		Spectra Logic	

OUR VOLUNTEERS



“In your kitchen, we may help to feed some hungry tummies, but to be affiliated with this amazing organization; now that is food for our souls.”

The Trekking Chefs
(Volunteer Cooking Group)

“We were thankful to serve Attention Homes in a small way and show the kids that the community cares about them and their future. Serving brought our corporate team together in a meaningful way. It was fantastic to see the staff’s passion and dedication to the kids they serve”

Lee Kendall - Covidien

WE LOVE OUR VOLUNTEERS!

Volunteers are the heart of Attention Homes.

Without their dedication and passion for our mission, our work would not be possible. We believe our volunteers are at the core of powerful change both within our organization and in the community making a huge difference in the lives of displaced, homeless, and runaway youth. In 2013, **over 800 individuals and 31 groups** volunteered 10,000 hours of time helping our youth. We honor and recognize our volunteers - ordinary people who accomplish extraordinary things through their service.

- Active volunteers – **814**
- Service clubs, faith communities, businesses & other groups – **31**
- Volunteer hours – **10,559**
- Value of hours contributed (according to the Independent Sector’s estimated dollar value of \$25.10 for time contributed) – **\$265,030**



2013 VOLUNTEER SERVICE AWARDS

Catherine & Marty Hopkins

Runaway and Homeless Youth Shelter Volunteers of the Year

Marilyn Lemke

Residential Program Volunteer of the Year

Trekking Chefs

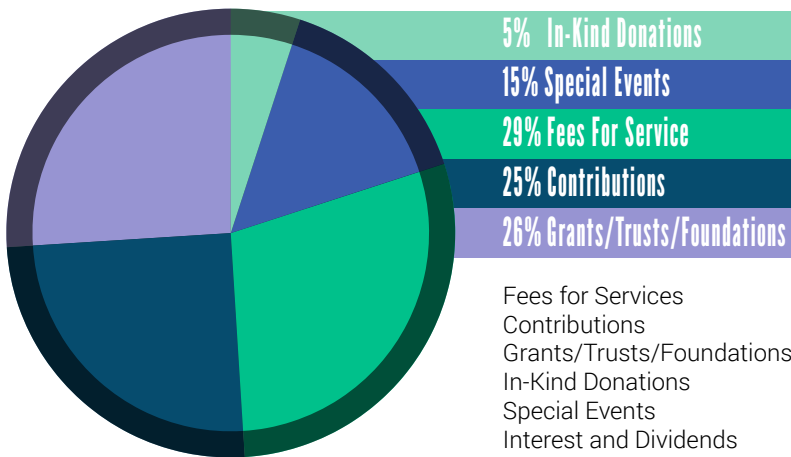
Group Volunteers of the Year

Herb Kroehl

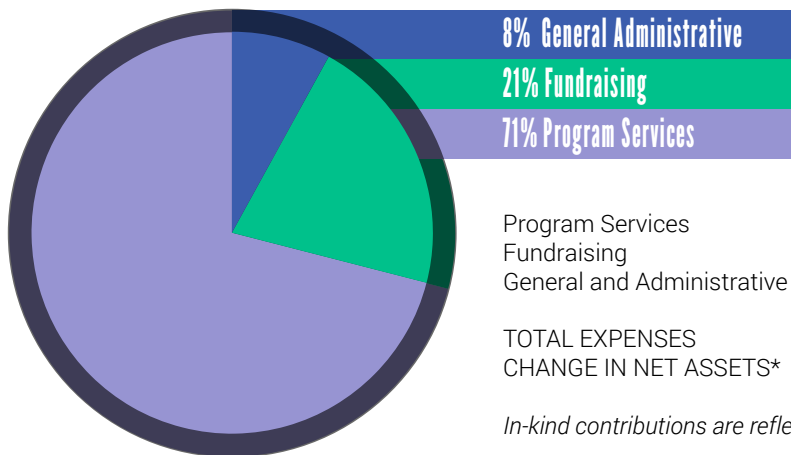
Vern Gardner Distinguished Service Award

FINANCIAL REVIEW

SUPPORT AND REVENUE



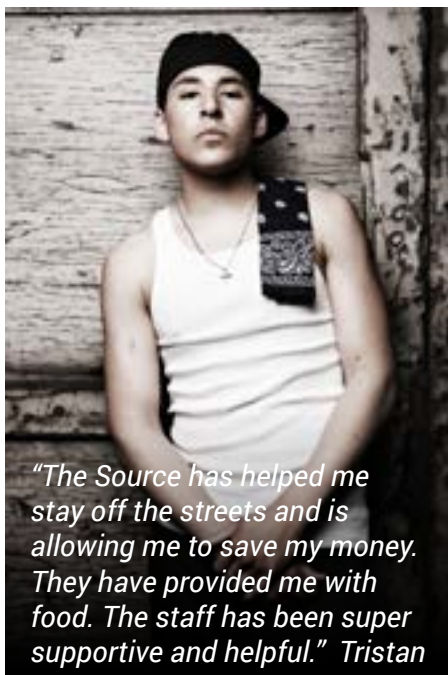
	Unrestricted	Temporarily Restricted	Total
Fees for Services	416,739		416,739
Contributions	333,974	14,950	348,794
Grants/Trusts/Foundations	138,781	220,791	359,572
In-Kind Donations	77,827		77,827
Special Events	216,865		216,865
Interest and Dividends	2,151		2,151
Unrealized Gain on Investments	7,506		7,506
Realized Loss on Disposal of Assets	(651)		(651)
Net Assets Released from Restrictions	487,948	(487,948)	
TOTAL SUPPORT AND REVENUE	1,681,140	(252,207)	1,428,933



EXPENSES

	Unrestricted	Temporarily Restricted	Total
Program Services	978,068	-	978,068
Fundraising	289,400	-	289,400
General and Administrative	119,503	-	119,503
TOTAL EXPENSES	1,386,971	-	1,386,971
CHANGE IN NET ASSETS*	294,169	(252,207)	(41,962)

In-kind contributions are reflected in each expense category



"The Source has helped me stay off the streets and is allowing me to save my money. They have provided me with food. The staff has been super supportive and helpful." Tristan

2013 STATEMENT OF FINANCIAL POSITION

Assets		Total
Current Assets	\$	397,025
Property & Equipment		1,251,362
Investments		0
Endowment held by others		66,512
Loan Fees Net of Amortization		0
Total Assets	\$	1,279,366
Liabilities		
Current Liabilities	\$	64,429
Net Assets		
Unrestricted	\$	1,213,951
Temporarily Restricted		986
Total Liabilities & Net Assets	\$	1,279,366

**Decrease in net assets is the result of \$250,442 being released for 2012 capital improvements.*

DONATE

VOLUNTEER

TAKE ACTION!



CLICK HERE TO DONATE

- **\$50,000** provides 2,000 hours of licensed counseling and family mediation for our youth for one year
- **\$10,000** funds 800 hours of case management for access to education, employment, health care and long-term, safe housing
- **\$5,000** funds four (4) months or 5,500 units of food in our shelter program – 2,500 overnight shelter meals, 2,160 day drop-in meals and 840 street outreach food units
- **\$2,500** funds 10 nights of emergency overnight shelter for 10 youth, including food, clothing, shelter, case management and supervision
- **\$1,000** funds one day of drop-in services for 25 youth, emergency overnight shelter for ten (10) youth and street outreach to 20+ youth contacts
- **\$500** funds 10 one-hour life skills training sessions for up to 25 youth



CLICK HERE TO VOLUNTEER

Volunteers may work directly with the teens, serve on our Board and committees, help with administrative work, building maintenance, fundraising and providing professional skills. As a volunteer, you could:

- Serve on our street outreach team
- Mentor or tutor youth on homework
- Teach life skills such as cooking and budgeting
- Speak on virtues such as respect and honesty
- Coordinate recreational activities such as basketball and art projects
- Teach classes such as dance, computer science, or music
- Make meals and eat with the kids



CLICK HERE TO TAKE ACTION

Spread the word about youth homelessness and Attention Homes. Write a letter to the Daily Camera. Host a wish list drive. Hire one—or more—of our at-risk youth. Attend our May Kaleidoscope Gala. Participate in our 4th Annual Sleep Out for Homeless Youth in November. Become a corporate partner.

So many of the youth served by Attention Homes are trying to navigate the space between childhood and adulthood; negotiating the desire for independence and the fear of added responsibility along with the heavy burden of abuse and trauma.

For more information on how YOU can get involved with Attention Homes, call us at (303) 447-1206 or visit our website, www.attentionhomes.org.



**attention
HOMES**

CHANGING LIVES OF
YOUTH IN CRISIS

Attention Homes provides opportunities for youth in crisis to change their lives. We offer shelter, community-based living and teaching of life skills necessary for an independent future.